



GARMANY
GOLF

**Steve Berry
& Friends
New Zealand
Bucket List
*Experience***

Jan 25 – Feb 08, 2025

PROJECTED DAILY ITINERARY & FEATURES

14 Nights in 5 Star Accommodations

3 Rounds of Bucket List Golf

Full Breakfast Daily, Select Meals at Lodges

All Domestic Flights and Ground Transportation

Tours & Cultural Activities

Garmany Golf Concierge Service

JAN 25

Arrival to Queenstown Airport
Private Transfer to Hotel
Transfer Time: 25 Minutes
Check In:
Rosewood Matakauri Lodge
Dinner Included on Property

JAN 29

Central Otago Private Wine
Tasting 1 in the morning and 1
after lunch
Lunch in the Winelands
Dinner Included on Property
- OR - choose to go into
Queenstown for meal at
Botswana Butchery

JAN 26

Day at Leisure
Afternoon Activity
Suggestion: Glenorchy
Dinner Included on Property

JAN 27

Walking Tour of Queenstown
Recommended Lunch:
Madam Woo
Short (90 Min) Guided Hike in
Queenstown
Dinner Included on Property

JAN 28

Golf Round #1:
Jack's Point with Buggies,
- Club Rentals Req (NZ\$80) -
Shoe Rentals Req (NZ\$20)
Transfer Time: 30 Minutes
Spa Experience in the
Morning for Non-Golfers
(Treatments TBD to be
Confirmed with Concierge)
Recommended Lunch: Mora
All Guests for a 1/2 Day
Arrowtown Afternoon Tour
Dinner Included on Property



PROJECTED DAILY ITINERARY & FEATURES

14 Nights in 5 Star Accommodations

3 Rounds of Bucket List Golf

Full Breakfast Daily, Select Meals at Lodges

All Domestic Flights and Ground Transportation

Tours & Cultural Activities

Garmany Golf Concierge Service



JAN 30

Domestic Flight to
Christchurch
Private Transfer to Hotel
Transfer Time: 25 Minutes
Check In:
The George
Time in Christchurch in the
Afternoon
Recommended Dinner: 50
Bistro at The George

JAN 31

The Antarctic Center
including Breakfast With the
Penguins & VIP Exclusive
Tour
Transfer Time: 20 Minutes
Recommended Lunch:
Riverside Markets
A Privately Guided
Christchurch Half-Day Tour
Recommended Dinner:
Fiddlesticks

FEB 1

Tour of Akaroa & Banks
Peninsula - Private Nature
Cruise
Transfer Time: 90 Minutes
Recommended Dinner:
5th Street

FEB 2

Domestic Flight to Hawke's
Bay
Classic Car Art Deco Tour
around Napier
Transfer Time (Without
Tour): 45 Minutes
Recommended Lunch: TBA
Check In:
Rosewood Cape Kidnappers
Dinner Included on Property

PROJECTED DAILY ITINERARY & FEATURES

14 Nights in 5 Star Accommodations

3 Rounds of Bucket List Golf

Full Breakfast Daily, Select Meals at Lodges

All Domestic Flights and Ground Transportation

Tours & Cultural Activities

FEB 3

Golf Round #2:

Cape Kidnappers with Buggies,
- Club Rentals Req (NZ\$100)
- Shoe Rentals Req (NZ\$30)
- Caddies Req (NZ\$60 + 20 Grat)
Spa Experience for Non-Golfers
(Treatments TBD to be
Confirmed with Concierge)
Recommended Lunch: On-site
Afternoon Activity: Cape
Kidnappers Sanctuary Walk
Dinner Included on Property

FEB 7

Nature Tour of The Bay of Islands
Lunch Recommended: The
Plough & Feather
Visit The Caves and Forests of
The Northland
Dinner Included, on Property

FEB 4

Day at Leisure
Private Hawke's Bay Winery
Tour
Platter Lunch Included
Tour around Hastings and Te
Mata Peak
Dinner Included, On Property

FEB 8

Departure Day
Kerikeri Airport connecting
through Auckland
Safe Travels

FEB 5

Domestic Flight to Kerikeri
Private Transfer to Hotel
Transfer Time: 35 Minutes
Check In:
Rosewood Kauri Cliffs
Dinner Included on Property

FEB 6

Golf Round #3:
Kauri Cliffs with Buggies,
- Club Rentals Req (NZ\$100)
- Shoe Rentals Req (NZ\$30)
- Caddies Req (NZ\$60 +20
Grat)
Spa Experience for Non-
Golfers (Treatments TBD to be
Confirmed with Concierge)
Private BBQ Lunch at Pink
Beach, on Property
Dinner Included on Property

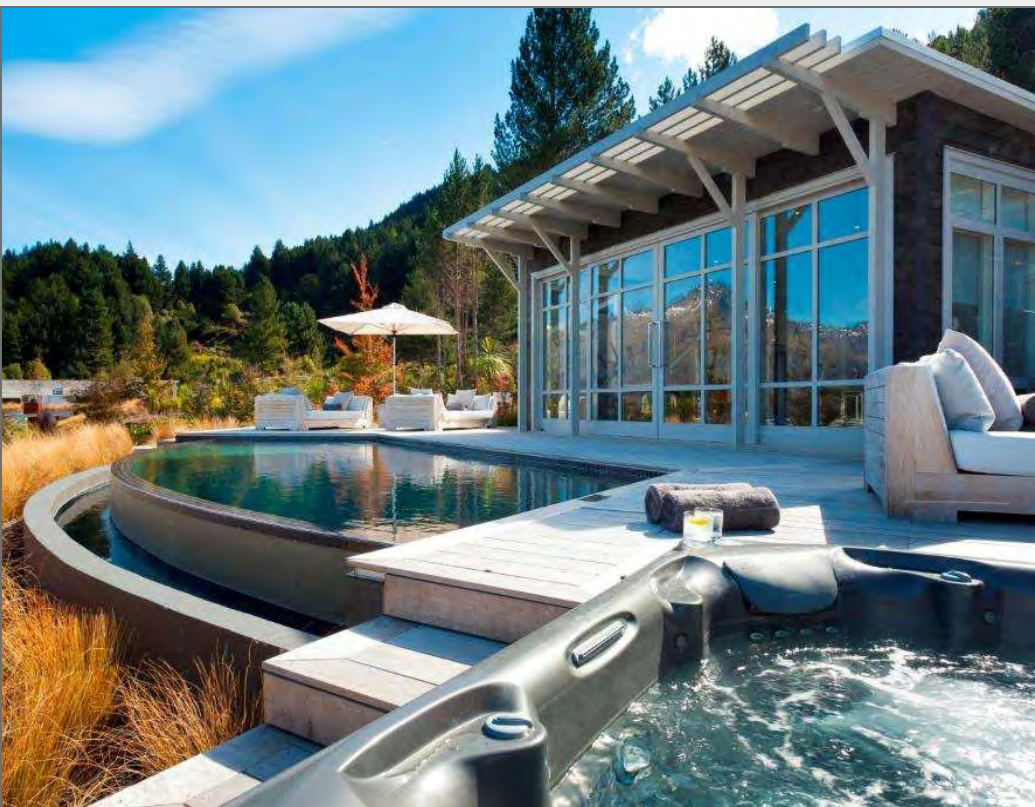




ENJOY YOUR STAY

Matakauri *Lodge*

The Rosewood Matakauri Lodge is situated on the shores of Lake Wakatipu, near the town of Queenstown on the South Island of New Zealand. The location offers stunning views of the lake and the surrounding mountains. The lodge provides luxury accommodation with various room and suite options. The rooms are designed to offer a blend of modern comfort and natural beauty, with large windows to take advantage of the picturesque landscape.





FEATURED COURSE

Jack's *Point*

The John Darby designed 18-hole par 72 course provides a range of challenges for both experienced and beginner golfers. The 6,388-meter undulating course follows natural contours and features tussock grasslands, dramatic rocky outcrops and steep bluffs offset by striking alpine and lake views.





FEATURED ACTIVITY

Hiking in *Queenstown*

There are a wide variety of walking tracks in the Queenstown region, with options available for every duration and ability. Your private guide will liaise with you to determine the very best experience for you.





FEATURED ACTIVITY

Historic *Arrowtown*

Enjoy a half day tour to historic Arrowtown, the home of gold-mining in the region. Your guide will take you on a scenic route including the dramatic Shotover River gorge and the Edith Cavell bridge, past Coronet Peak to Arrowtown. Visit the historic Arrowtown Chinese settlement where early gold-miners lived, walk along the shady bank of the Arrow River or explore the boutiques, art galleries and gold and pounamu jewellery stores in Arrowtown village.





FEATURED ACTIVITY

Central Otago Private Wine *Tasting*

The Central Otago region is home to a number of world renowned wineries and winemakers. Today you will enjoy a privately guided tour of the region and your local guide will tailor the 3 wineries visited to suit your particular tastes, ensuring you enjoy yet another exquisite experience.

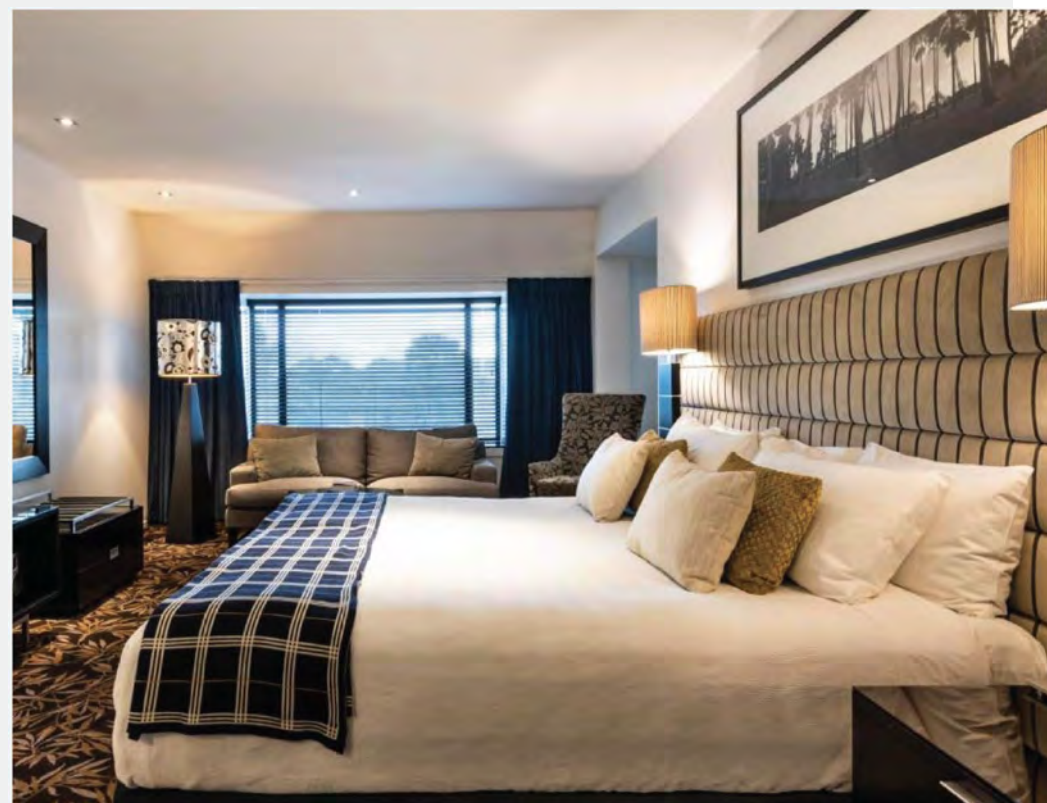




ENJOY YOUR STAY

The *George*

The George is the essence of supreme comfort in Christchurch, and is renowned for offering a personalised stay and attentive staff. Located in the heart of Christchurch overlooking the picturesque Hagley Park and river Avon you will find peaceful Christchurch accommodation just steps from the cultural precinct and key attractions. Impeccable service in an intimate ambience is guaranteed at The George- the only Christchurch Hotel with a one to one staff to guest ratio.





OPTIONAL ACTIVITY

Tour of *Christchurch*

Your local guide will reveal the fabulous history of Christchurch City. Learn more about this English influenced city and how it is emerging from the challenges of the earthquakes in 2011. Visit the stunning Botanic Gardens, the innovative Transitional Cathedral as well other compelling architecture. Enjoying a mix of beautifully restored heritage buildings that are nestled amongst some of the most modern engineered & designed buildings today.





FEATURED ACTIVITY

VIP Tour of the *Antarctic Center*

The menu's great, the view's spectacular and our little friends in feathered tuxedos oversee the service! It's hard to beat breakfast with the penguins at the International Antarctic Centre. Breakfast commences at 8 am next to the Penguin Encounter and includes an informative talk on Little Blue Penguins and Antarctica. After a hearty meal you'll have all the energy you need for a private tour of the rest of the center.





FEATURED ACTIVITY

Akaroa & Banks Peninsula

Descending into Akaroa, New Zealand's only original French settlement, you will enjoy an exclusive private Nature Cruise taking in views of the dramatic coastline and getting up close and personal with Hector's Dolphins (the world's smallest and rarest dolphins), Fur Seals and Little Blue Penguins





ENJOY YOUR STAY

Rosewood *Cape Kidnappers*

Located in the Hawke's Bay and set on 6,000 acres of dramatic coastline, The Rosewood Cape Kidnappers offers spectacular views from every angle of the Pacific Ocean. On the exterior, the lodge resembles a cluster of farm buildings, whilst on the interior guests will find graciously scaled rooms full of natural light and unexpected treasures.





FEATURED COURSE

Cape *Kidnappers*

Cape Kidnappers was designed by Tom Doak and completed in 2004. The course has stunning sea views, playing high above the ocean atop dramatic cliffs. It is built on a ridge-and-valley landscape and has been hailed as one of the great modern marvels in golf.





OPTIONAL ACTIVITY

Kiwi Discovery *Walk*

An experience like no other and exclusive to guests of Cape Kidnappers, this is your chance to see the rare, endangered kiwi in its own, natural habitat. Venture into the pine forests surrounding the lodge with an experienced guide as they carry out essential monitoring of Kiwi chicks.





FEATURED ACTIVITY

Hawke's Bay *Winery*

The Hawke's Bay wine region is the oldest and the second most productive wine region in the country and is best known for its full-bodied red wines and Chardonnay. The region's temperate climate and plentiful sunshine provide the ideal conditions for grape-growing. The region is internationally renowned for producing a wide range of varieties to a very high standard.





OPTIONAL ACTIVITY

Te Mata Peak & Havelock *North*

Standing 399 meters above the Heretaunga Plains, Te Mata Peak is both a visual feature and an integral part of Hawke's Bay culture and history. You will enjoy stunning views of the bay from Mahia to Cape Kidnappers, unique topography, geology, flora and fauna, and a rich Māori history. You will also have the chance to stroll through the prosperous country village of Havelock North, which has a natural, tree-lined charm.





ENJOY YOUR STAY

Rosewood Kauri *Cliffs*

The opulent and elegant suites at Rosewood Kauri Cliffs are sumptuously designed with you in mind. The spacious suites offer peace, comfort and complete relaxation. Opportunities abound for outdoor pursuits and many activities within the picturesque Kauri Cliffs property. The food is Michelin Star worthy, for each and every meal!



FEATURED COURSE

Kauri *Cliffs*

Kauri Cliffs features 18 holes of golf designed by David Harman. The course offers spectacular views of the Pacific Ocean, with several holes situated along the cliffs, providing golfers with a stunning backdrop of the sea. The 7th hole, which is played from a high tee down to a green situated on the edge of a cliff is often cited as one of the most beautiful golf holes in the world.





ACTIVITY

BBQ Lunch at *Pink Beach*

This afternoon you will be treated to a sumptuous BBQ at the Pink Beach. Located on the property, Pink Beach is one of the most beautiful beaches in the world, and the ideal place to relax after your morning's activities.

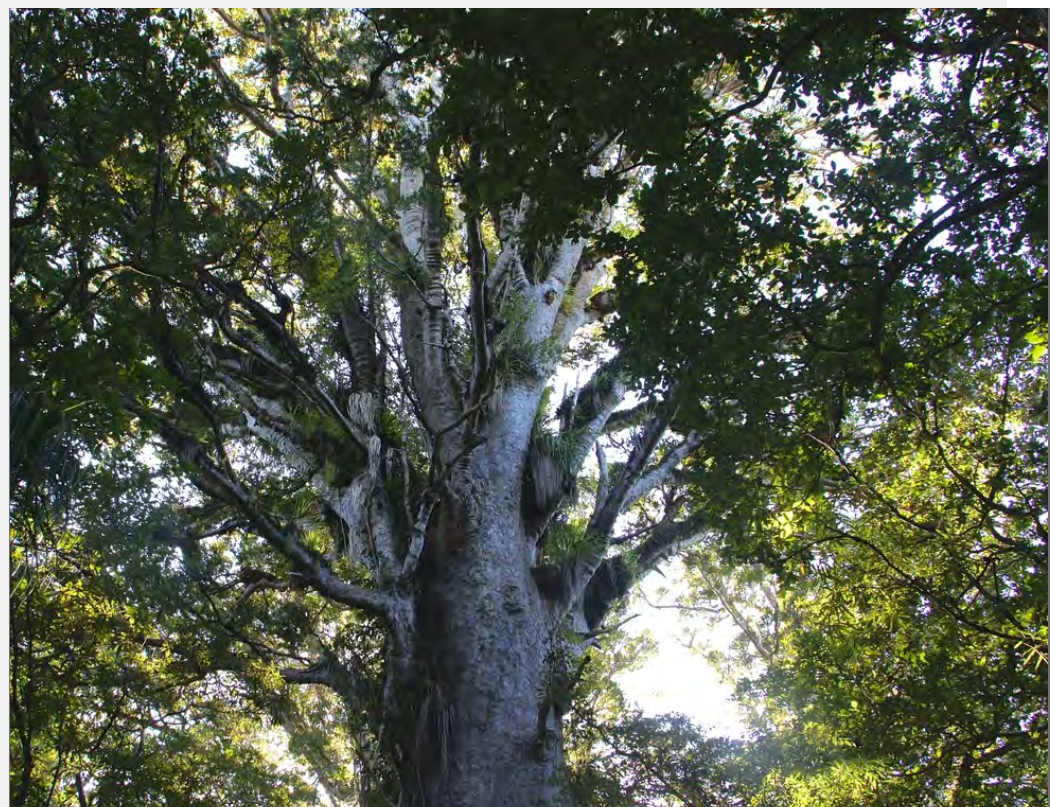




ACTIVITY

Caves & Forests of *Northland*

Visit the Kawiti Caves, journeying underground through a network of stalactites and stalagmites and discovering thousands of luminous glow worms and listen to the story of the history of the caves discovery by the chieftainess of the Ngati Hine tribe. Private guided walk through the Puketi Forest. One of the most diverse in New Zealand, and be in awe of the famous giant Kauri trees.



Steve Berry & Friends New Zealand Bucket List Experience

Jan 25 - Feb 08, 2025

Please Contact the Garmany Golf Concierge Team
with any questions at
Experience garmanygolf.com





Our *Promise*

We realize that you have a choice when you travel and we are thrilled and honored to have the opportunity to create your unforgettable Bucket List Experience. We will do EVERYTHING possible to ensure that your Experience exceeds your expectations.



GARMANY
GOLF

LOS ANGELES | ENGLAND | ARGENTINA

Contact the Garmany Golf Concierge Team
at experience@garmanygolf.com.

